



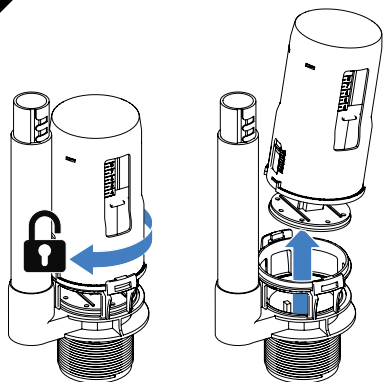
IMPORTANT NOTES

Before installation flush supply pipes and ensure cistern is clean and free from debris.

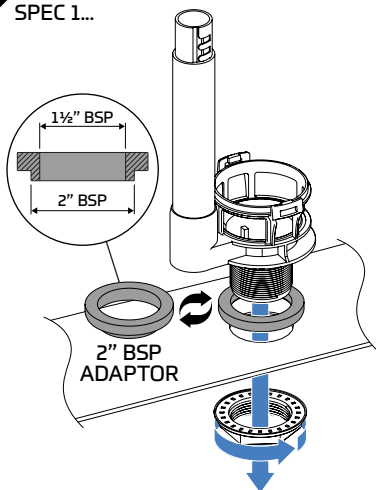
No sealing compound, paste, flux or solvent to be used in contact with plastic or rubber surfaces to avoid damage. Rubber washers will provide adequate seal. PTFE tape may be used on threads. No chemical block/additive to be used in this cistern.

Do not over-tighten plastic fasteners. Hand tight + ¼ turn is recommended and should provide an adequate seal.

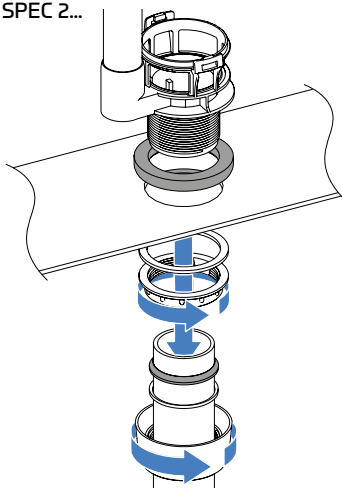
1



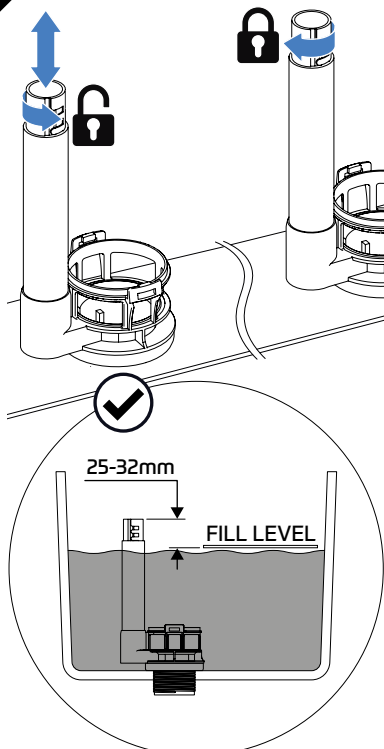
2a SPEC 1...

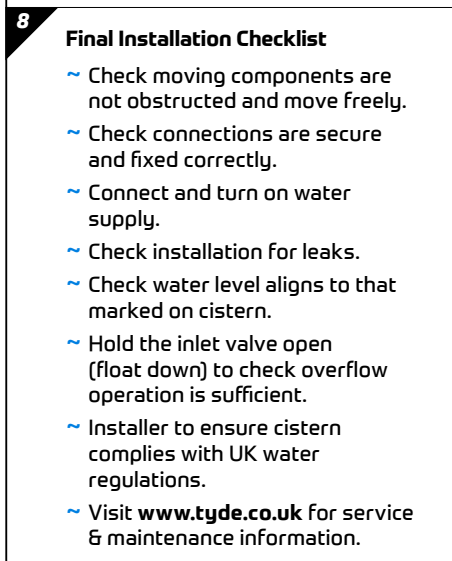
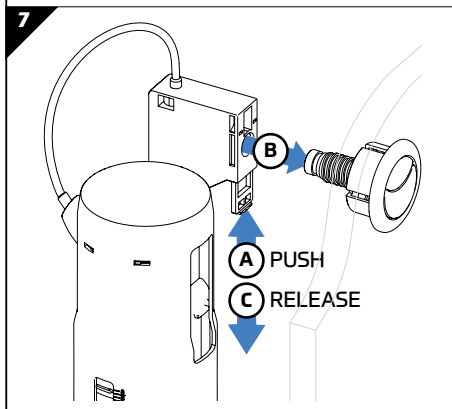
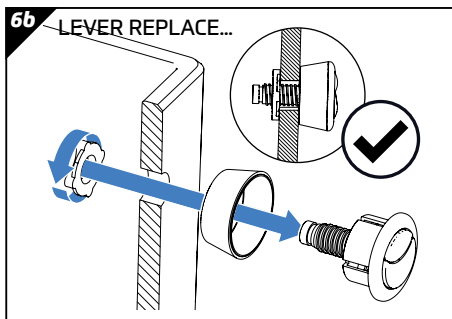
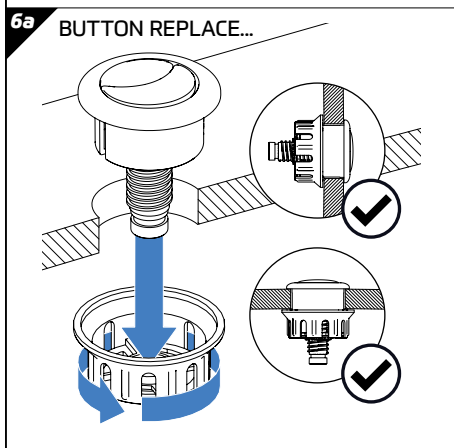
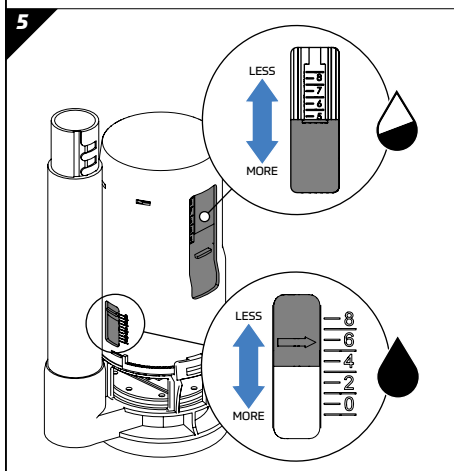
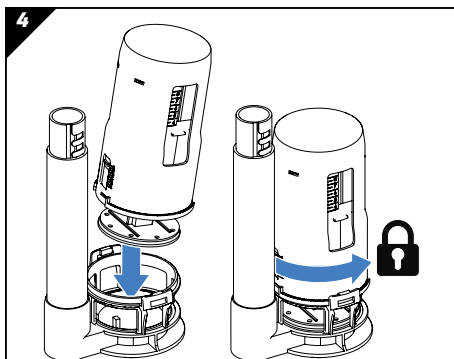


2b SPEC 2...



3





TYDE

295 Birmingham New Road
Dudley, West Midlands
United Kingdom
DY1 4SJ

A Thomas Dudley Business

t +44 (0)121 557 5411

f +44 (0)121 557 5345

e info@tyde.co.uk

w www.thomasdudley.co.uk/tyde

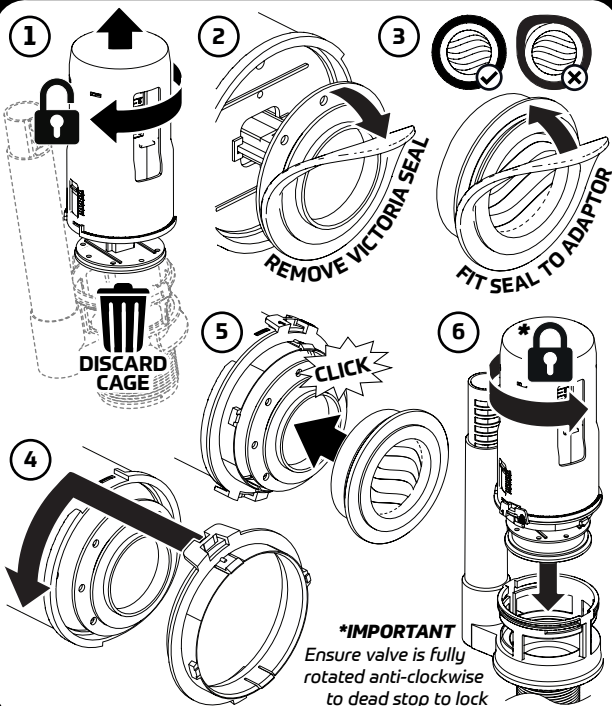
© 2022 TYDE_SISLF372893_12050 Iss F



Dudley



VALVE MATE
RETRO-FIT FLUSH VALVE ADAPTOR



Dudley product code **374969**



5 013241 119481